



BIOSTIMULANTS

Specialists in plant health

# Proplex

The Ultimate Biostimulant





# Proplex

## The Ultimate Biostimulant

**Proplex** is a combination of multiple raw materials adding up to so 'much more than the sum of its parts' because of its unique formulation, the perfect example of a Micromix technology.

**Proplex** is a unique material, originally developed to de- stress crops it has over many years proved to be an unusually reliable biostimulant product. At first developed for use on high- value fruit and salad crops, both protected and outdoor, in hotter climates. It became an effective tool to encourage earliness, yield and quality when used during the fruiting/flowering stage of growth.

In more recent years it was introduced to broadacre cropping in more temperate climates where it proved successful in helping overcome abiotic (environmental) stress, improving overwintering, and accentuating herbicide activity as well as helping to slow disease ingress and progression. It has been used from young plant stage right up until the later green- stages of many crops, with measurable responses at all timings. '**Rate for Rate**' it outperforms any other biostimulant.

## Features:

- Low temperature activity, autumn treatments can dramatically reduce winter-kill.
- It has a lower application rate compared to many comparable and less sophisticated products
- It has excellent compatibility in tank- mix.
- It will benefit other tank- mix partners improving performance; fungicides etc. through plant strengthening.
- It helps high- potential crops to reach new heights of yield and quality.
- It helps stressed or damaged crops recover.
- It provides many intermediates for growth that can be readily incorporated into plant metabolic pathways, speeding them up.
- It has been used in combination with herbicides to improve herbicide activity without risk of adverse crop effect.
- Rapid acting: Immediately see the benefits in a matter of days
- Elicitation effect: causing increases in growth hormone production
- Low application rates when used as part of a programme

## What does Proplex do to the crop?

### 1 Increases yield quality and quantity in any crop

**Proplex** works within the plant in several areas, but mainly it enhances plant health and strength by providing intermediates for growth, so the plant doesn't need to make it itself:

- Providing and saving extra energy
- Reinforcing the plants own natural growing processes
- Pushing root metabolism development at both high and low temperatures



*Crop: Winter feed barley*

*Location: UK East Midlands*

*Growing conditions: Poor depth of soil coupled to drought*

- 2L/ha Proplex applied in spring
- Only 12mm rainfall between February and May
- Dramatic response

### 2 Has an elicitor effect for Stronger cells and accelerated growth

**Proplex** provides building blocks for carbohydrate and protein generation in the shape of Amino acids and sugars but also contains some compounds that are precursors of natural hormones so that the plant can make its own growth hormones faster and more efficiently especially under extreme conditions. The natural growth hormones, added to the effect on photosynthesis and chlorophyll content lead to an accelerated production of stronger cells.

### 3 Reduces stress levels as well as recovery from stress

**Proplex** addresses the metabolic issues generated by stress to alleviate the effects of stress. It contains a range of macro and micronutrients which contribute to the overall plant health keep crops growing even in extreme heat and drought.

*Crop Winter Wheat*

*Location: Poland*

*Application: 0.5 L/ha of Proplex applied at 3 leaf stage in October Growing conditions: Winter temperatures of down to -20 and thick snow coverage.*

*Picture was taken in February after the snow melted.*

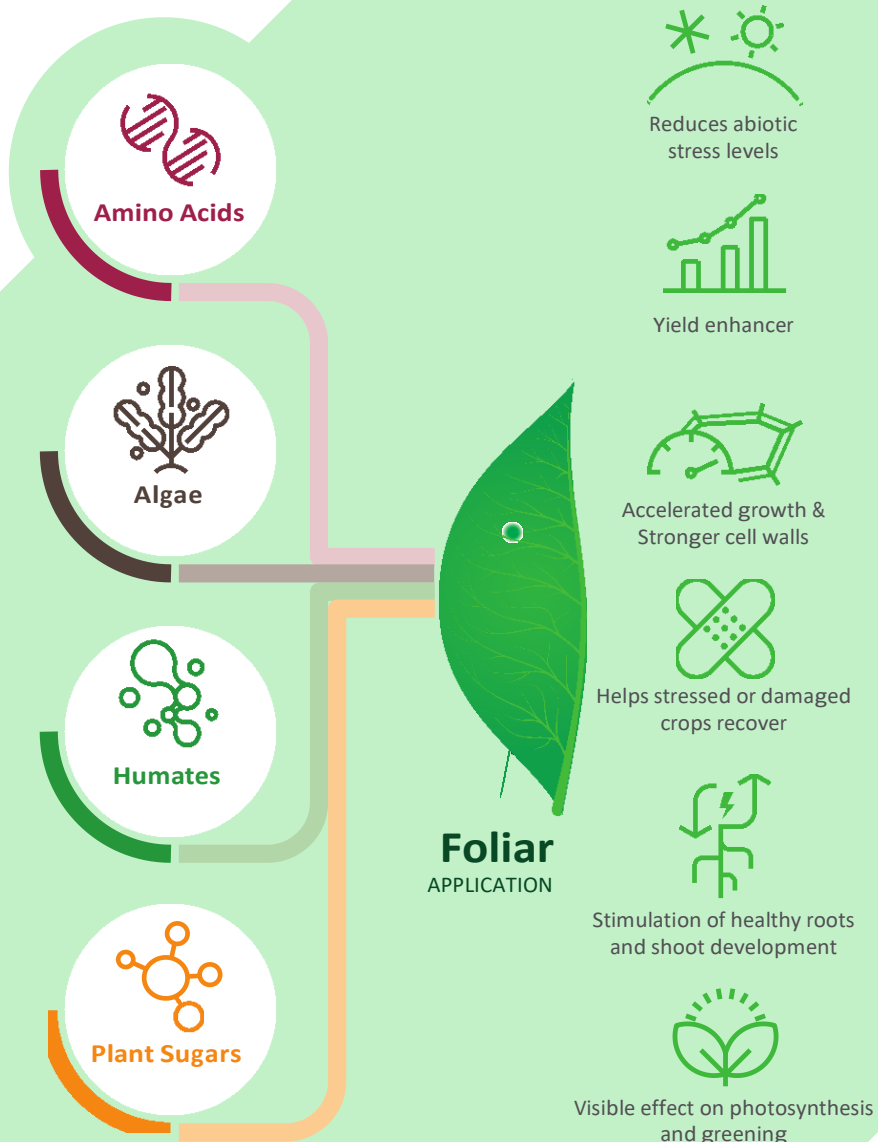






## Typical analysis:

Nitrate Nitrogen	2.00%
Magnesium	0.30 %
ThioSulphur	5.00 %
Copper	0.05 %
Boron	0.15 %
Iron	0.20 %
Manganese	0.10 %
Zinc	0.50 %
Carbon	1.25 %
Ascophyllum (algae)	5.0 %
L-Amino acids	Trace
Betaines	Trace
Vitamin B1	Trace
Giberellins & Auxins	Trace





## How to use Proplex?

Proplex liquid can be used on all crops and at all growth stages.

Autumn application is recommended to improve over-wintering and increase resistance to winter-kill, at 0.5L/ha Proplex

### **Application rate should always be proportional to crop biomass:**

Seedling to young plant:	0.25 to 0.5 L/ha
Late vegetative stage:	1.0 - 1.25 L/ha
From stem elongation/reproductive stage:	1.0 to 2.0 L/ha
Mature High-biomass crops and root crops	2.0 L/ha
Tree crops (programme of 3 to 4 applications)	1.0 to 2.0 L/ha

A programme of repeated lower-dose treatments is always more effective than a single higher dose.

